

B

Type



Docs



Plans

BLD08-3335

Building Permit Number

777

Street Number

SEBASTOPOL RD

Street Name

BEL

Community Code

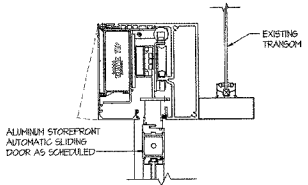
125-111-037

APN

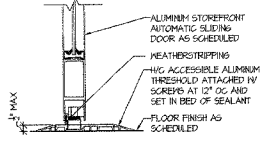


**DEMOLITION NOTES**  
 1 REMOVE EXISTING STOREFRONT DOOR AND FRAME COMPLETE.

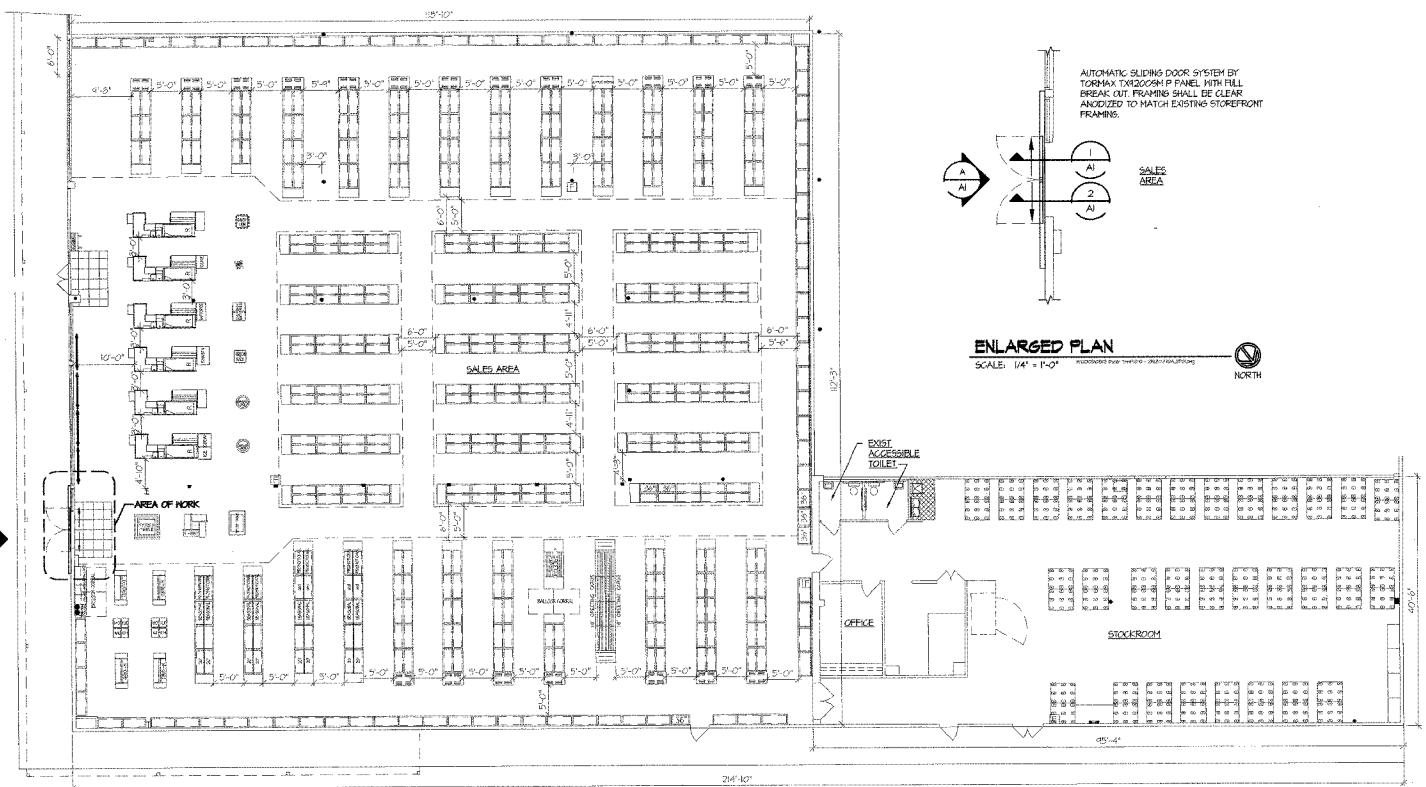
**PARTIAL DEMOLITION PLAN**  
 SCALE: 1/8" = 1'-0"  
 NORTH



**HEAD AT STOREFRONT DOOR**  
 SCALE: 3/4" = 1'-0"  
 NORTH



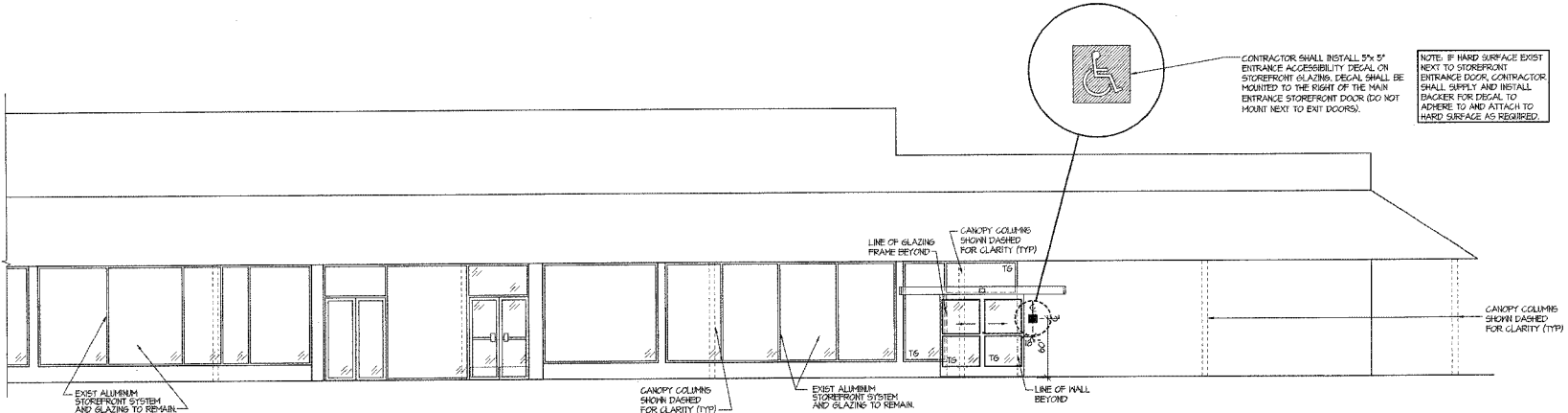
**SILL @ AUTOMATIC-SLIDING STOREFRONT DOOR**  
 SCALE: 3/4" = 1'-0"  
 NORTH



**ENLARGED PLAN**  
 SCALE: 1/4" = 1'-0"  
 NORTH

AUTOMATIC SLIDING DOOR SYSTEM BY TOPRAX TXR200SM P PANEL WITH FULL BREAK OUT FRAMING SHALL BE CLEAR ANODIZED TO MATCH EXISTING STOREFRONT FRAMING.

**FIXTURE PLAN**  
 SCALE: 1/8" = 1'-0"  
 NORTH



**EXTERIOR ELEVATION**  
 SCALE: 1/4" = 1'-0"  
 NORTH

DATE	BY	DESCRIPTION
PROJECT	DESIGNED	
DRAWN	BY	
CHECKED	DATE	

Cederquist  
 Rodriguez  
 Ripley P.C.  
 129 N. Wolfe Beach Blvd.  
 #4 (157) 432-2028  
 FAX (157) 624-8883



**DOLLAR TREE**  
 ROSELAND SHOPPING CENTER STORE 2162  
 111 BENEFICIAL ROAD, SANTA ROSA, CALIFORNIA  
 ENTIRE PLAN DEMOLITION PLAN, ENLARGED PLAN, STOREFRONT ELEVATION AND DETAILS

AI

