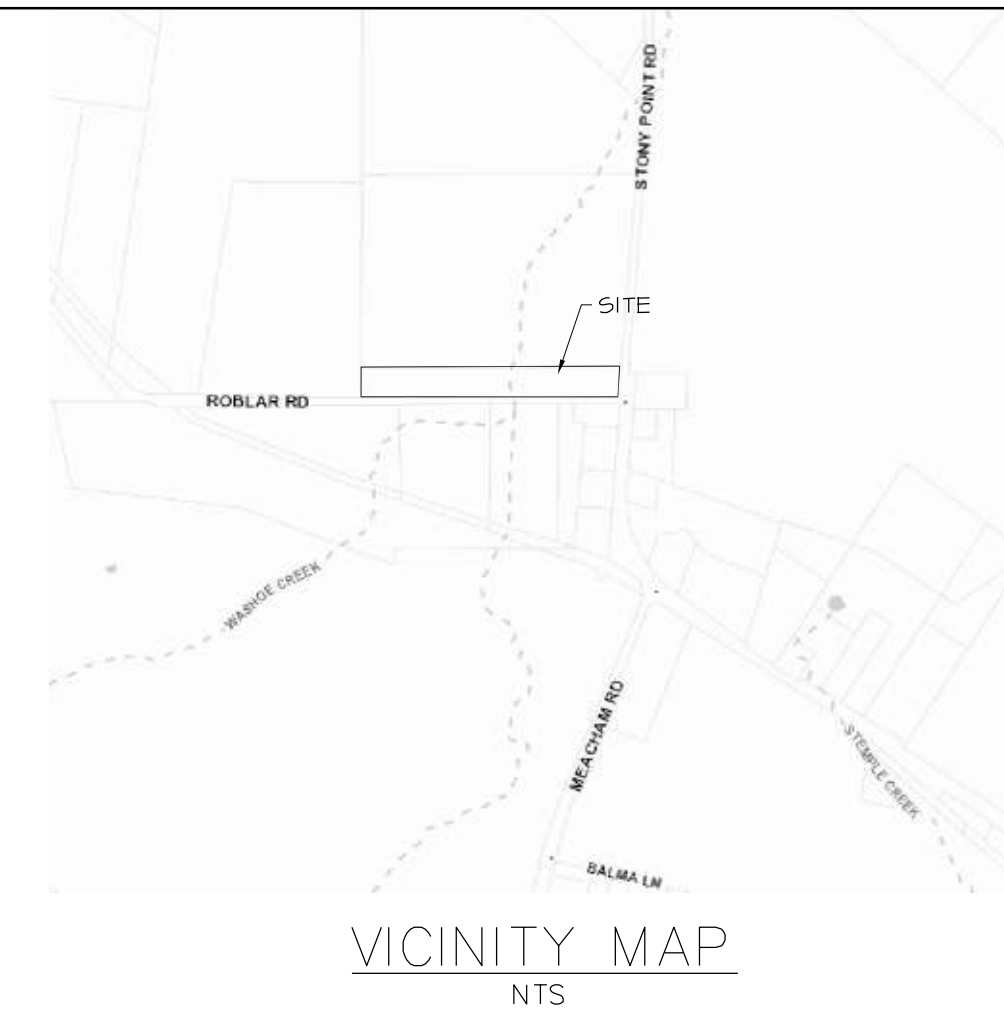


REVISION / DATE	EXCELIS
ISSUED FOR REVIEW	
ISSUED FOR PERMIT	
ISSUED FOR USE	



EMPIRE ASPHALT AND ENGINEERING CO., INC.
3980 SANTA ROSA AVENUE
SANTA ROSA, CA 95407
Tel (707) 545-7440
Fax (707) 586-8524
www.empiresphalt.com



SCOPE OF WORK:

ALTERATION OF PARKING AREA CONSISTING OF PAVING OVER EXISTING ROCKED PARKING AREA, REMOVING 12" OF EXISTING SUBGRADE, COMPACTING SUBGRADE TO 90% R.C., IMPORTING 12" CLASS-2 ROAD BASE ROCK, AND CAPPING WITH 3" OF ASPHALTIC CONCRETE (A/C). SEAL COATING THE EXISTING PARKING PAVED AREAS. RESTRIPE PARKING STALLS. CREATING TWO CODE COMPLIANT ACCESSIBLE PARKING STALLS ADJACENT TO THE WASHOE HOUSE WITH CODE COMPLIANT ACCESS PATH TO FRONT DOOR. REPAIRS, CONSTRUCTION AND ALTERATIONS WILL NOT ALTER THE EXISTING DRAINAGE PATH.

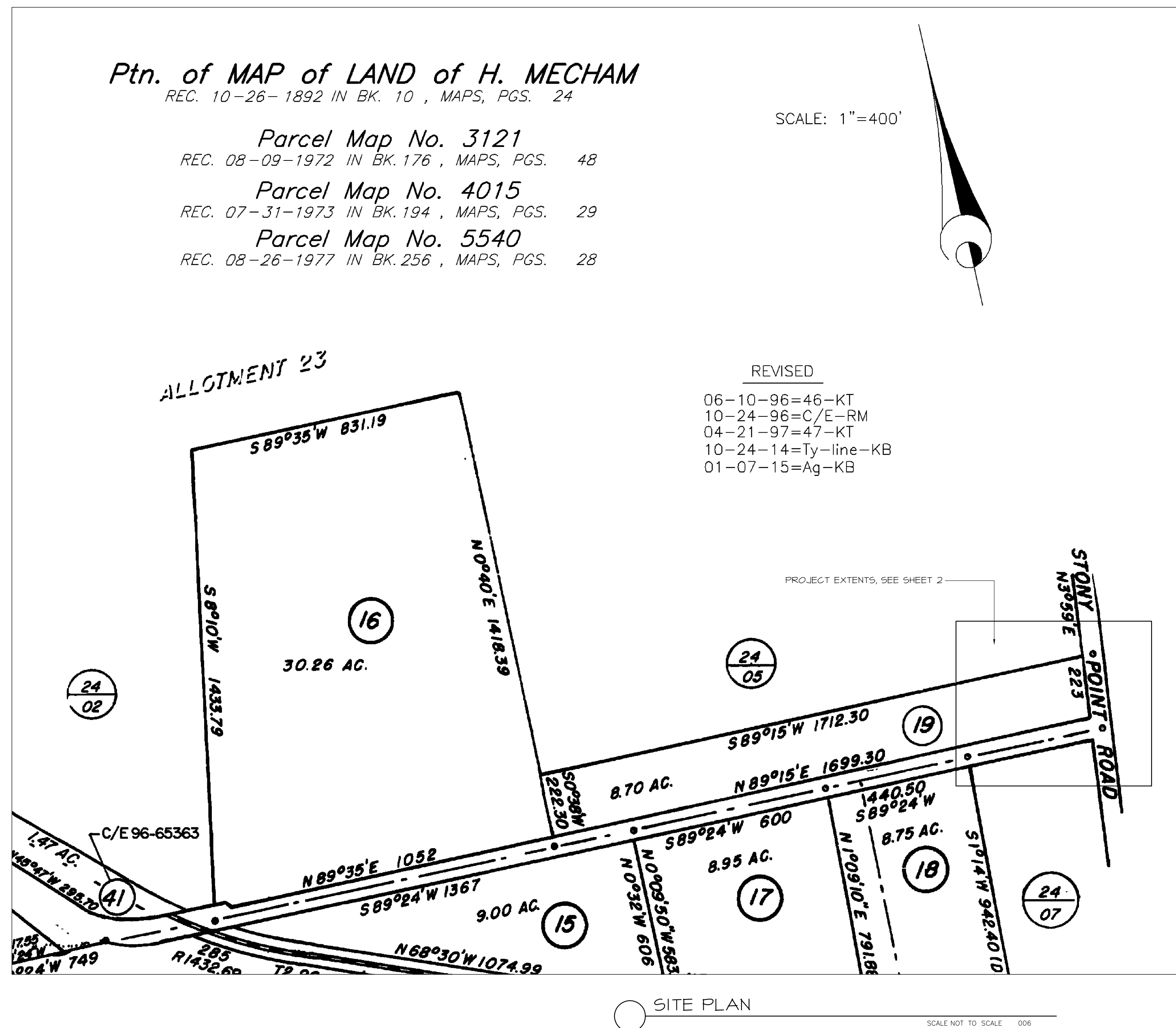
EXISTING PAVED AREA:	22648 SQ. FT.
NEW PAVED AREA:	4446 SQ. FT.
NEW PAVED ACCESSIBLE AREA:	712 SQ. FT.

SHEET INDEX:

1	EXISTING SITE
2	PROPOSED PARKING ALTERATION
3	EROSION CONTROL MEASURES

PROPERTY OWNER:
WASHOE HOUSE
2840 ROBLAR ROAD
PETALUMA, CA 94952

CONTRACTOR: _____
EMPIRE ASPHALT AND ENGINEERING
3980 SANTA ROSA AVENUE #2
SANTA ROSA, CA 95407
707-545-7440
CONTACT: RODNEY SICHEL

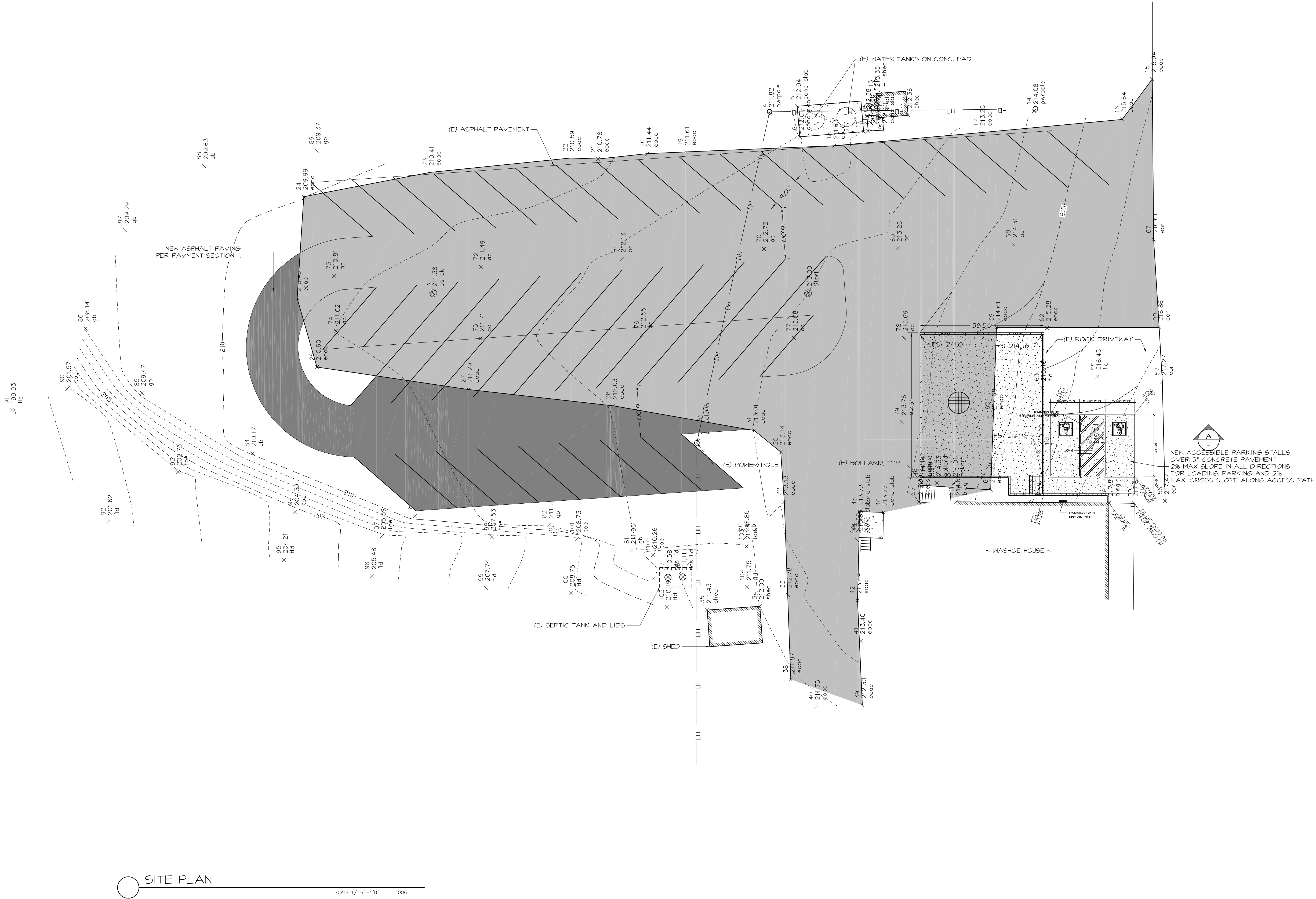
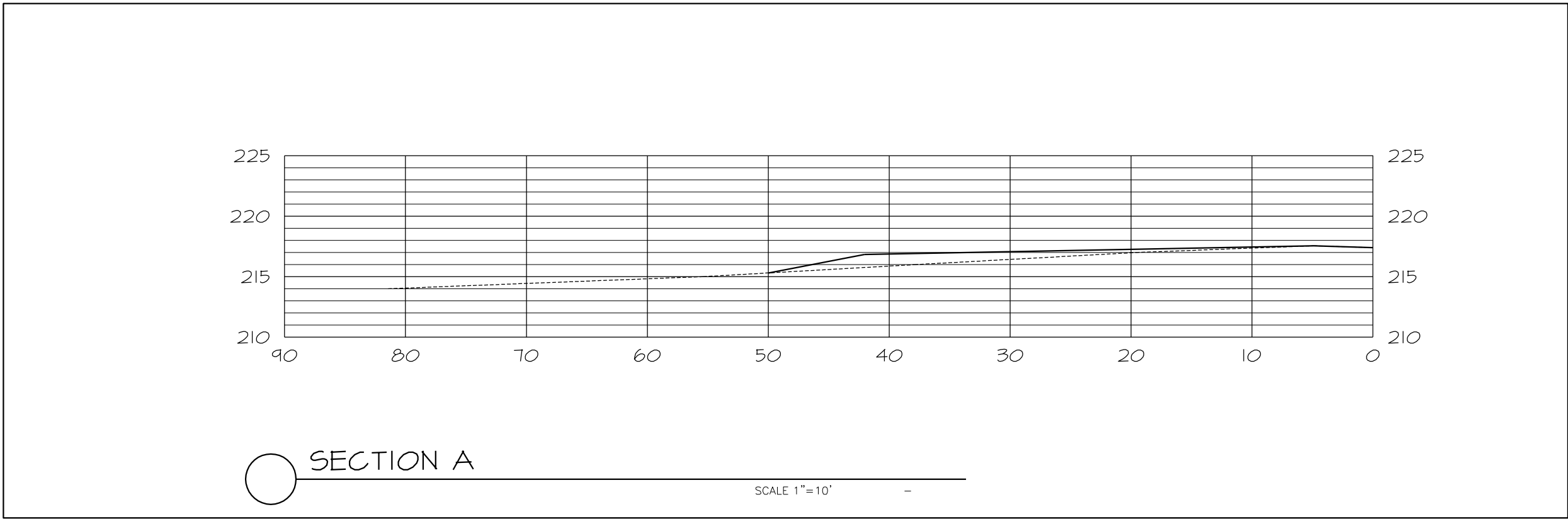
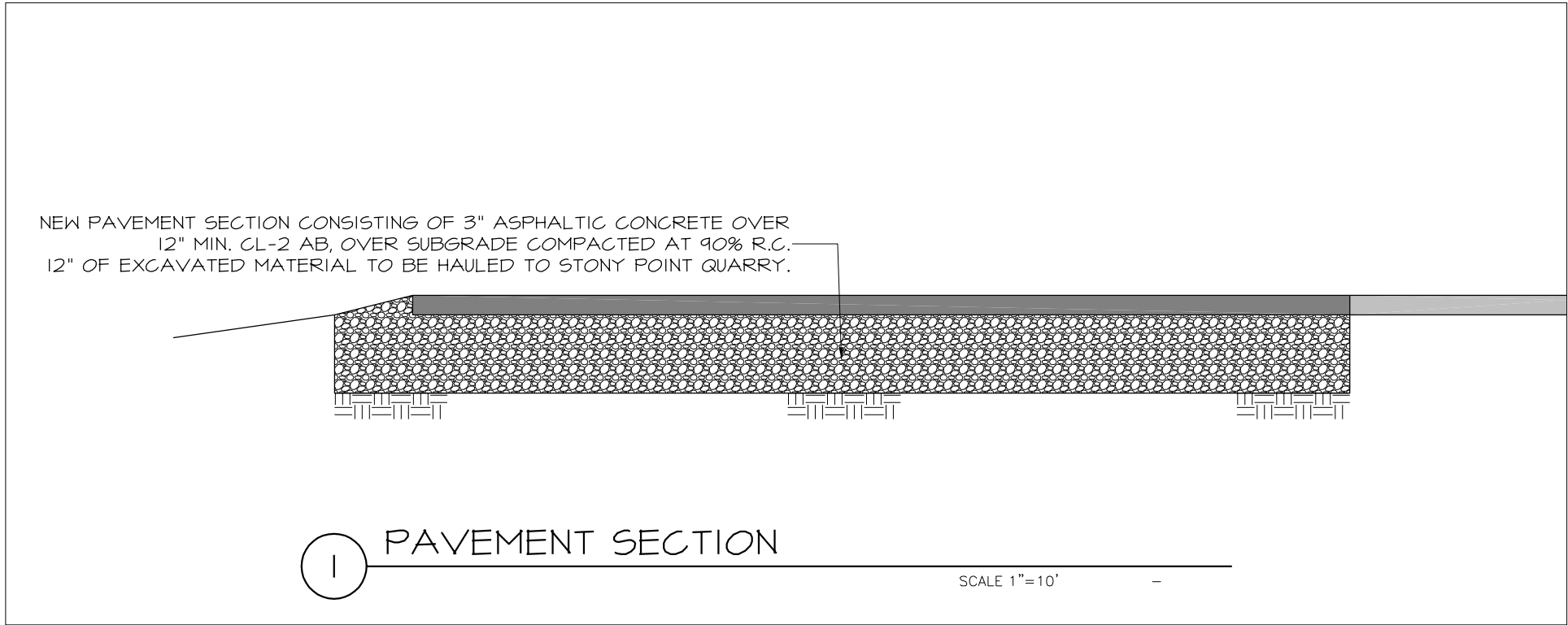



**WASHOE HOUSE
PROPOSED PARKING LOT**

WASHOE HOUSE
2840 ROBLAR ROAD
PETALUMA, CALIFORNIA
APN 024-040-019

DATE:	06/19/20
SCALE:	1"=20'
DRAWN BY:	PRC
JOB #:	144.01
FILE #:	144.01

SHEET
1
OF **3** SHEETS



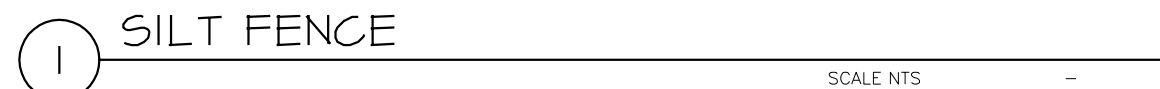
REVISION / DATE		EXCELUS
ISSUED FOR REVIEW	12/01/14	COX
ISSUED FOR PERMIT		
ISSUED FOR USE		
EMPIRE ASPHALT AND ENGINEERING CO., INC.		
3980 SANTA ROSA AVENUE SANTA ROSA, CA 95407 Tel (707) 545-7440 Fax (707) 566-8524 www.empireasphalt.com		
		
WASHOE HOUSE 2840 ROBLAR ROAD PETALUMA, CALIFORNIA APN 024-040-019		
DATE: 06/19/20 SCALE: 1"=20' DRAWN BY: FRC JOB #: 144.01 FILE #: 144.01		
SHEET		
2		
OF 3 SHEETS		

GENERAL

- ### RAINY SEASON OPERATIONS

- ### YEAR ROUND REQUIREMENTS

- *NON-ASPHALTIC, DERIVED FROM PLANTS



EMPIRE ASPHALT AND ENGINEERING CO., INC.
3980 SANTA ROSA AVENUE
SANTA ROSA, CA 95407
Tel (707) 545-7440
Fax (707) 586-8524
www.empireasphalt.com



WASHOE HOUSE
2840 ROBLAR ROAD
PETALUMA, CALIFORNIA
APN 024-040-019

SHEET

3

OF **3** SHEETS