

### PLAN OF RECORD

### MOUND SEPTIC SYSTEM

**David Doht** (*Advantage Consulting*) REHS #4088

301 Jensen Ln • Windsor, CA 95492 • 707/838-3939 • Fax 707/838-6064

SCALE <b>1"=20'</b>	APPROVED BY	DRAWN BY <b>DOHT</b>
DATE <b>7-1-01</b>		REVISED <b>7-31-02</b>

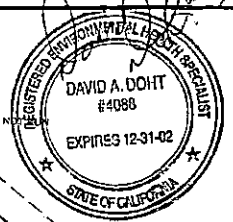
**4405 SLUSSER ROAD**

**A.P.# 57-070-025**

DRAWING NUMBER

#### LEGEND

- Profile hole (typ)
- Primary (100%)
- Distribution valve (typ)
- Monitoring well (typ)
- Perc hole (typ)
- 100% Expansion
- Purge valve (typ)
- Topo by Carlenzoli



57-070-025

100 FT. WELL S/B LINE

PROPERTY LINE

SEE 1"=20' SCALE ENLARGEMENT PG 4

57-070-021 EXPANSION AREA EASEMENT

EXISTING WELL TO BE DESTROYED PER SO. CO. REGULATIONS.

SEE 1"=20' SCALE ENLARGEMENT PG 3

# PLAN OF RECORD

## MOUND SEPTIC SYSTEM

David Doht (Advantage Consulting) REHS #4088

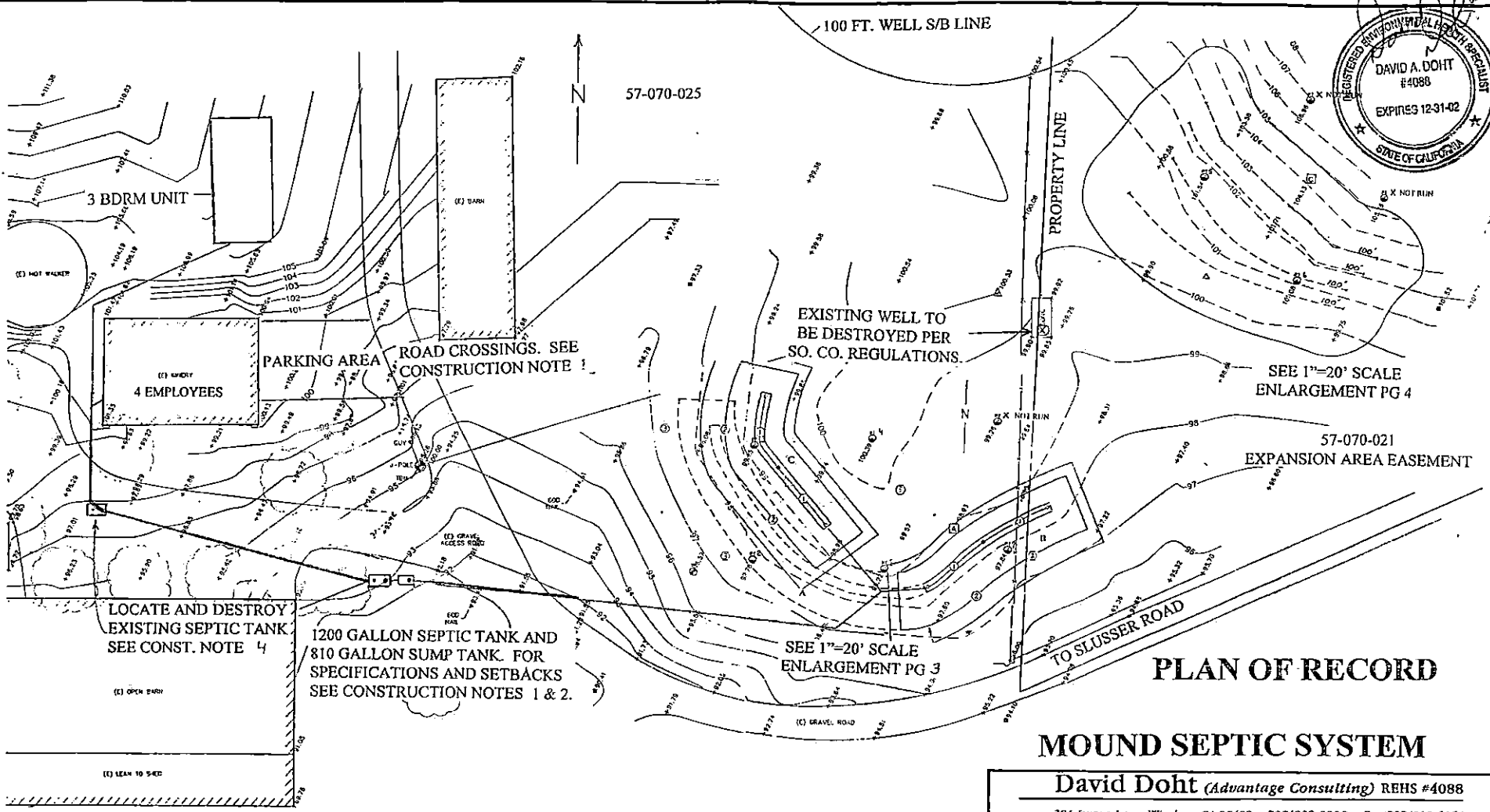
301 Jensen Ln. • Windsor, CA 95492 • 707/838-3939 • Fax 707/838-6064

SCALE: 1"=40'	APPROVED BY:	DRAWN BY DOHT
DATE: 7-1-01		REVISED 7-31-02

### 4405 SLUSSER ROAD

### A.P.# 57-070-025

DRAWING NUMBER



3 BDRM UNIT

4 EMPLOYEES

PARKING AREA

ROAD CROSSINGS. SEE CONSTRUCTION NOTE 1

LOCATE AND DESTROY EXISTING SEPTIC TANK SEE CONST. NOTE 4

1200 GALLON SEPTIC TANK AND 810 GALLON SUMP TANK. FOR SPECIFICATIONS AND SETBACKS SEE CONSTRUCTION NOTES 1 & 2.

(E) OPEN BARN

(E) LEAN TO S-42

(E) GRAVEL ACCESS ROAD

(E) GRAVEL ROAD

(E) BARN

(E) HOT WALKER

N

