

Figure 6H-6. Shoulder Work with Minor Encroachment (TA-6)

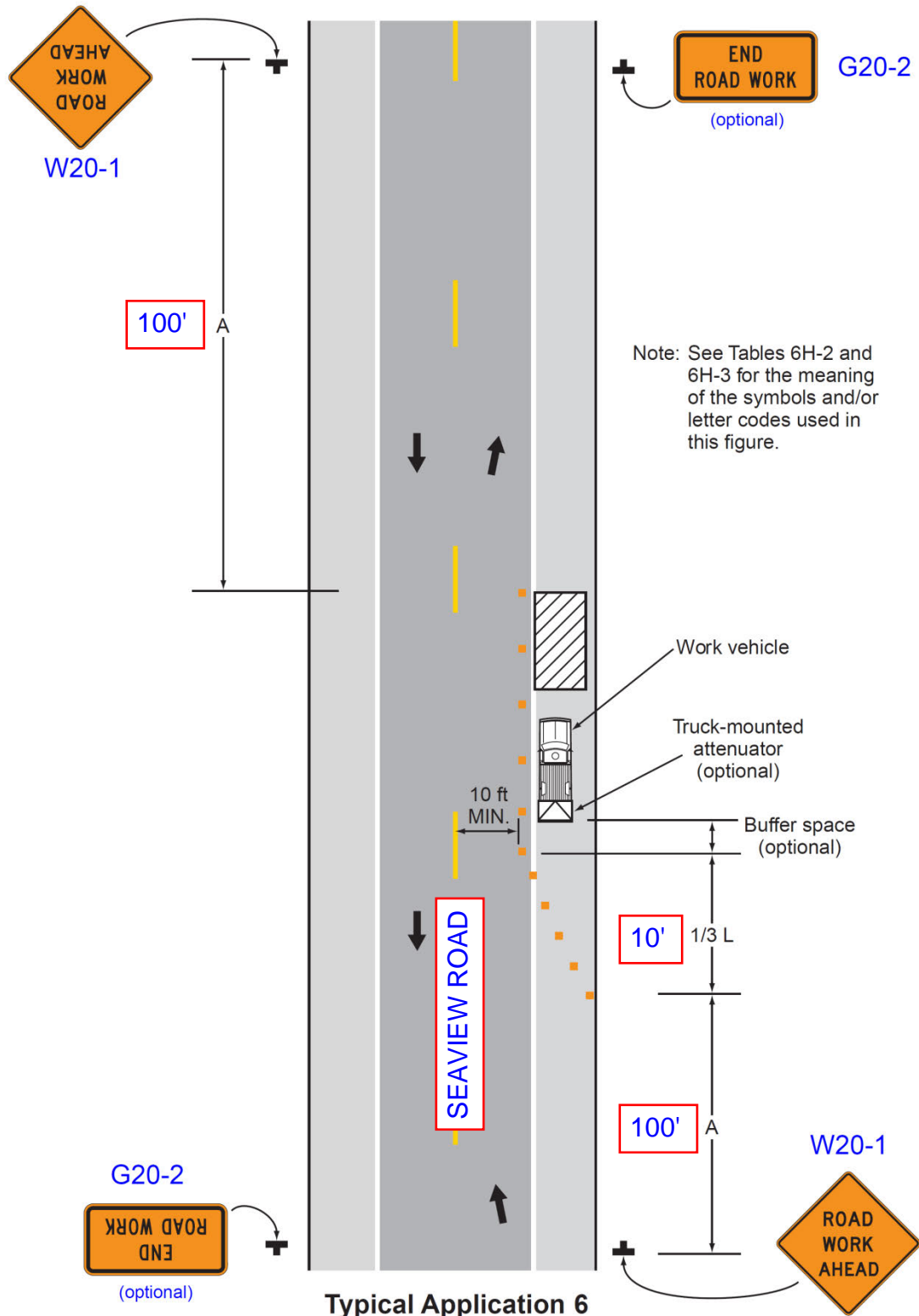


Table 6H-3. Recommended Advance Warning Sign ~~Minimum~~ Spacing

Road Type	Distance Between Signs**		
	A	B	C
Urban (low speed) - 25 mph or less***	100 feet	100 feet	100 feet
Urban - more than 25 mph to 40 mph***	250 feet	250 feet	250 feet
Urban (high speed) - more than 40 mph***	350 feet	350 feet	350 feet
Rural	500 feet	500 feet	500 feet
Expressway / Freeway	1,000 feet	1,500 feet	2,640 feet

* ~~Speed category to be determined by the highway agency.~~

** The column headings A, B, and C are the dimensions shown in Figures 6H-1 through 6H-46. The A dimension is the distance from the transition or point of restriction to the first sign. The B dimension is the distance between the first and second signs. The C dimension is the distance between the second and third signs. (The "first sign" is the sign in a three-sign series that is closest to the TTC zone. The "third sign" is the sign that is furthest upstream from the TTC zone.)

*** Posted speed limit, off-peak 85th-percentile speed prior to work starting, or other anticipated operating speed in mph.

Table 6H-4. Formulas for Determining Taper Length

Speed (S)	Taper Length (L) in feet
40 mph or less	$L = \frac{WS^2}{60}$
45 mph or more	$L = WS$

Where: L = taper length in feet
 W = width of offset in feet
 S = posted speed limit, or off-peak 85th-percentile speed prior to work starting, or the anticipated operating speed in mph